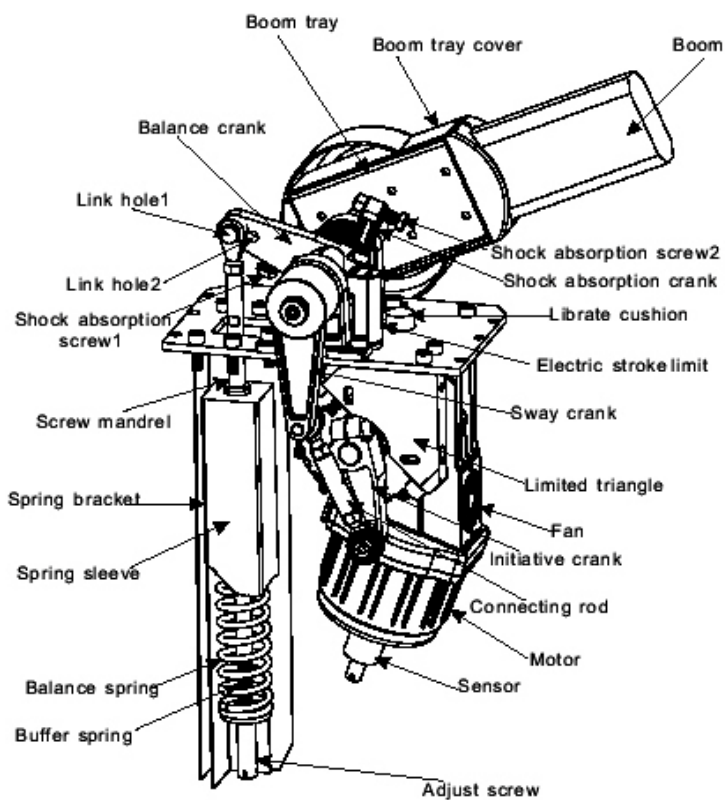
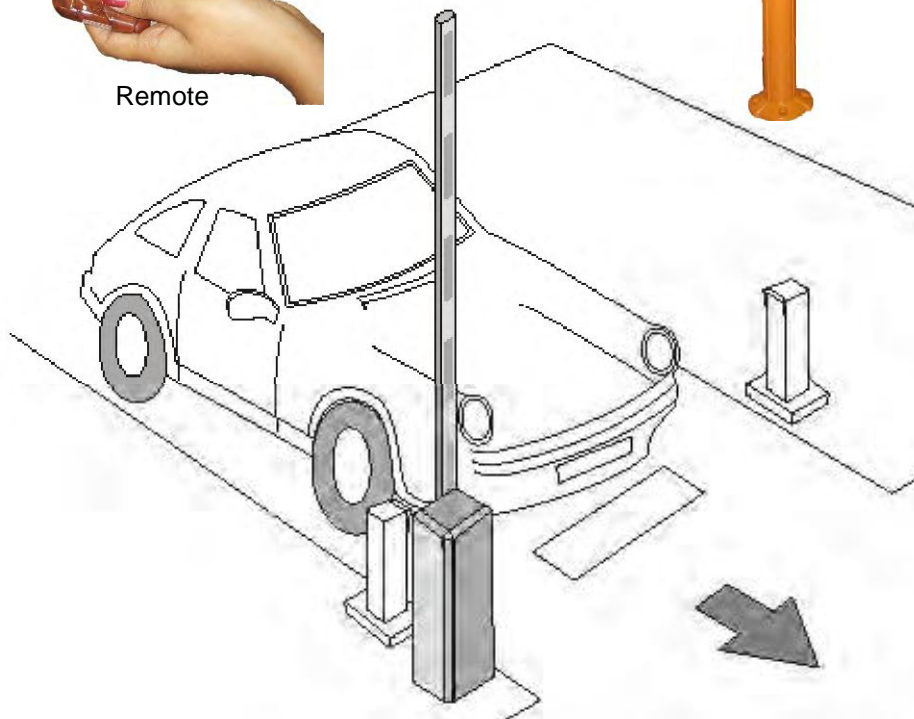


BOOM BARRIER



Flashing Light

Remote



	< 6 Mt
	60 Hz
	60 Kg
	1 ~ 6 Sec
	Built in Hydraulic Type DC Motor
	220v \pm 10%
	Microprocesor Based
	120 W
	Water Proof
	Remote Controller x 2 no.s & Clutch Keys for Manual Operation
	Upto 6 meter Boom Aluminium Covered With Wood Inside With Support
	RS 485
	By Balanced Spring system
	Left /right side (inter changeable)
	< 30 Mt
	Compact Disc & Communication Module
	Access Control attachments
	RS 485 to RS 232 Convertor
	Photo Cell